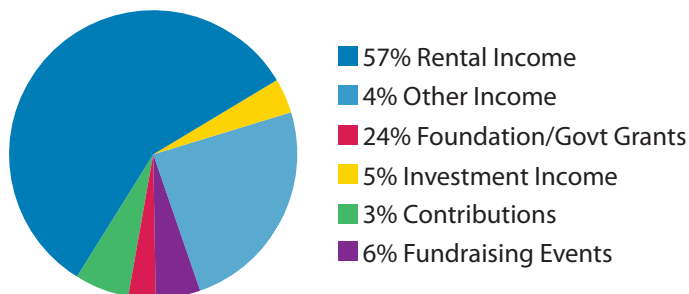


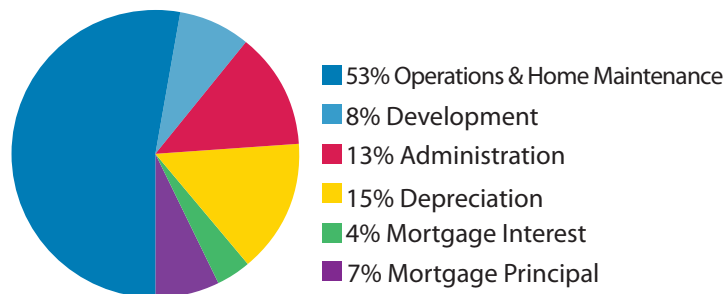
Revenue Analysis

total revenues: \$2,926,264



Expenditure Analysis

total expenditures: \$2,448,996



OUR MISSION: to enhance the lives of individuals with developmental disabilities by providing safe, affordable and well-maintained neighborhood homes.

Board of Directors

Scott Welz, *President*

Marcus Adrian, *First Vice President*

Jessica Erfling, *Second Vice President*

Kevin Gunn, *Third Vice President*

Jeff Wojciechowski, *Fourth Vice President*

Joan Perry, *Treasurer*

Julie Devine, *Secretary*

Matt Thayer, *Immediate Past President*

Cathy Ash

A. Van L. Brokaw

Robert J. Browning

Beth Bushke

James Fogle

Ed Hennessy

Jarrad Holst

Jake McDonald

Ken Morris

Lindsey Niemeier

Molly Tallarico

Matthew Thayer

Nancy Parker Tice

Ramona Tumblin-Rucker

Thomas K. Vandiver

Frank Wilson

To see our list of donors from 2016, visit us online and go to [Annual Reports under Financials.](#)

Assets

Current Assets

Cash	\$107,102
Accts. Receivable	\$92,912
Other Receivables	\$7,090
Prepaid expenses	\$15,355
Total Current Assets	\$222,869

Investments \$4,525,302

Property & Equipment Net Depreciation \$10,287,518

Tenant Deposits Held in Trust \$331,715

TOTAL ASSETS \$15,367,404

Liabilities & Net Assets

Current Liabilities

Accts. Payable	\$178,991
Accrued Mortgage Interest	\$7,465
Line of Credit	\$320,077
Current maturities of long-term debt	\$250,088
Total Current Liabilities	\$756,621

Tenant Security Deposits \$55,116

Long-Term Debt \$3,294,241

TOTAL LIABILITIES \$4,105,978

Net Assets

Temporarily Restricted	\$1,683,415
Unrestricted:	
Net investment in property	
equipment	\$6,184,022
Other Unrestricted	\$3,393,989

Total Net Assets \$11,261,426

TOTAL LIABILITIES & NET ASSETS \$15,367,404



Annual Report 2016

2016 Rainbow Homes!

When the number of Rainbow homes in the community increases, the number of individuals with intellectual/developmental disabilities (I/DD) who can find affordable, accessible housing also increases!

In **February**, a new RBV home in Maryland Heights enabled a man in a wheelchair to finally have an accessible home. He became housemates with a friend from his day program who needed to get out of a bad living situation. Now they both have a safe place to call home.

In **May**, a St. Charles house became the safe, positive home for 2 women with I/DD coming from unhealthy living situations. Now they have a happy, healthy home of their own.

In **May**, 3 aging men with declining mobility moved into a safe, accessible home in South County. This allowed them to avoid a nursing facility and continue living in their own community where they've been active all of their lives.

Weeks before their lease was up, 2 longtime housemates with I/DD were suddenly notified that they needed to find a new home or pay an increased rent, which neither could afford. But in **July**, we found them a safe, accessible home! They love their new home and are happy to still be living together.

Finding a home that fit Nate's wheelchair needs was a daunting task. But in **July** RBV found a home, and his support agency found 2 roommates who also wanted to live in the St. Charles area with Nate! Now he is with friends in a neighborhood home.

For many years, 3 ladies with I/DD bounced around from rental house to rental house and they ended up in an unsafe neighborhood. RBV found a home for them in **August** in Maryland Heights, where they feel safe to go on walks and participate in community activities.

In **October** RBV purchased our 1st Jefferson County home for 3 young ladies, expanding

our reach to 4 counties in the greater metropolitan area!

Funding for these homes was provided by generous foundations, corporations, individuals in our community, and local county tax boards: the *Productive Living Board for St. Louis County Citizens with Developmental Disabilities*, the *St. Charles Developmental Disabilities Resource Board*, and the *Jefferson County Board of Developmental Disabilities*.

Reflections on 2016

Our story begins at home, and our growth continues at record pace. With the purchase of **7 new RBV homes** in 2016, we are now providing **permanent homes to an additional 17 people** with I/DD in our community.

With the out-of-pocket expense of purchasing a new home at \$75,000, and the annual maintenance averaging \$2,500 per year, fundraising is a top priority. In order to grow, we depend on the kindness of others.

In **April**, we held our **20th Annual Somewhere Over the Rainbow Gala**. More than 340 people attended the event at The Four Seasons Hotel where Patrick Sly, Executive Vice President of Emerson, Kathy Osborn, Executive Director of the Regional Business Counsel, and Michael McMillian, President and CEO of the Urban League of Metropolitan St. Louis, were all honored with the Pillar of the Community Award in recognition of their tremendous and continuous support of the residents of St. Louis. Thanks to our generous sponsors, individuals and committee members, the event raised over **\$182,000** for the expansion of more RBV homes and capital improvements to our existing homes.

In **September**, our **7th Annual Chip in For Rainbow Village Golf Tournament** was

held at WingHaven Country Club. With 150 players and an increase in sponsorships, the event raised **\$110,000** that provided down payments for 2 new homes.

In 2016, more than **300 volunteers** helped beautify our homes with a wide variety of projects. Ramps and decks were stained, flowers planted, shrubs trimmed, garden beds weeded and mulched and many, many leaves were raked. Groups came from MICDS, Veiled Prophet Community Service Initiative, St. Louis University, Webster University and Christ Memorial Lutheran Church.

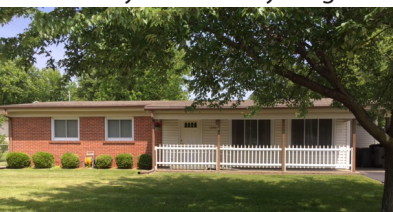
Welcome Home

Rainbow Village is committed to expanding the number of homes for people with developmental disabilities, so that residents can be assured of a home of their own where they can age in-place. Established in 1973, the **Rainbow Village** home model delivers safe, affordable, accessible housing for adult-children with I/DD. *The purpose of Rainbow Village is to provide safe, affordable, accessible housing so that adults with developmental disabilities can age in-place.* Hundreds of individuals are served each year and since the program's inception, thousands of lives have been changed.

Even after **40+ years** in operation, the demand for **Rainbow Village** homes continues to increase. We are committed to meeting the demand as much as possible. Our history is full of stories demonstrating compassion and dedication that has led to its success. We believe that people with developmental disabilities deserve an affordable place to call home in a safe neighborhood where they have the option to take part in the community where they live.



20th Annual Gala



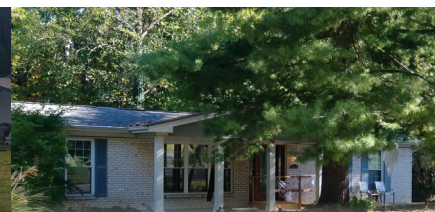
Maryland Heights



St. Charles



South County



Jefferson County